

Store at -20°C. Stable for at least 50 freeze-thaw cycles. It is also stable at 4°C for 30 days.

Volume:

2500 µl (for 500 app.)

Description:

The Lambda DNA is completely digested with Eco RI to yield bands ranging from 0.125 kb to 23 kb, suitable for use as molecular weight standards for agarose gels. The marker is composed to 6 purified individual DNA fragments (in base pairs): 21226bp, 7421bp, 5804p, 5643bp, 4843bp, 3530bp.

The approximate mass of DNA in each of the bands is total 50ng/µl.

They are all double-stranded DNA fragments.

10X Gel Loading Dye, Blue:

50% Glycerol

100 mM EDTA

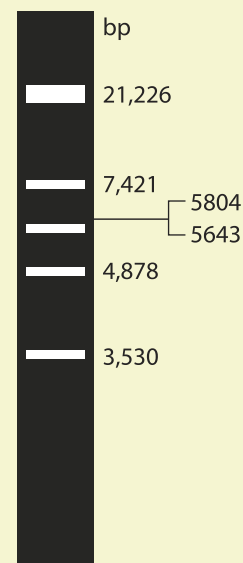
33 mM Tris-HCl (pH 8.0 at 5°C)

0.15% bromophenol blue

Usage notes:

We recommend loading **5µl** of λ / Eco RI DNA Marker in each lane.

This ladder was not designed for precise quantification of DNA mass but can be used for approximating the mass of DNA in comparably intense samples of similar size.



Lambda/EcoR I DNA Marker visualized by ethidium bromide staining on a 0.7% TAE agarose gel.

Product Use Limitations:

This product is developed, designed and sold exclusively for research purposes and in vitro use only.